



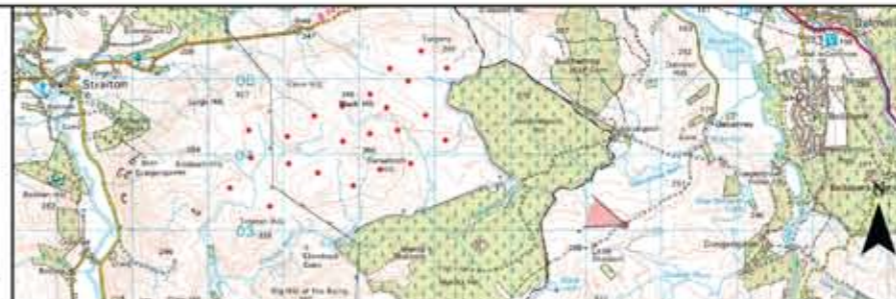
Photomontage enlarged by 200%



Data for viewpoint 04: Dalcairney to Knockdon footpath

Viewpoint Grid Reference	- 245494E, 603078N
View Direction	- 288.90 degrees
Viewpoint Elevation	- c 261 m AOD
Horizontal Field of View	- 45 degrees
Nearest proposed turbine	- 2.597 km
Viewing Distance	- 51 cm
Date and time of photo	- 24/09/2011 12:30

Wireline: While the landform and the curvature of the earth are taken into account, no features such as trees or buildings, which might otherwise obscure the views, are accounted for in the wirelines.



VIEWPOINT 04
Dalcairney to Knockdon footpath
Figure 6.13 D

**Dersalloch Windfarm
Environmental Statement
2012 Addendum**